



Municipality of South Bruce
CLC Meeting

November 3, 2016 – 7:00pm

Mildmay Recreation Complex



Nuclear Waste Management Organization (NWMO)

Adaptive Phased Management (APM) Project

South Bruce Community Liaison Committee (SBCLC) Meeting

November 3, 2016 – 7:00 p.m.

Mildmay-Carrick Recreation Complex, 24 Vincent Street, Mildmay

AGENDA

- 1. Call to Order**
- 2. Adoption of Agenda**
- 3. Disclosure of Pecuniary Interest and Nature Thereof**
- 4. Minutes of the Previous Meeting**
 - 4.1. October 6, 2016 SBCLC Regular Meeting**
- 5. Delegations: None**
- 6. NWMO CLC Task List Review**
- 7. Reports**
 - 7.1. SBCLC Update – Casey Bates, Project Co-ordinator, SBCLC**
 - 7.2. Municipal Update – Leanne Martin, Clerk**
- 8. Education**
 - 8.1 Paul Austin, Relationship Manager for Southern Ontario, NWMO – APM Update.**
 - 8.2 Paul Austin, Relationship Manager for Southern Ontario and Andy Keir, AECOM – Early Investment in Education and Skills**
- 9. Communications: None**
- 10. New Business**
- 11. Next Meeting**

South Bruce Community Liaison Committee Meeting – Agenda – November 3, 2016

The next meeting of the SBCLC is scheduled for Thursday, December 8, 2016 at 7:00p.m. (location to be determined).

12. Adjournment



**Nuclear Waste Management
Organization (NWMO) Adaptive Phased
Management (APM) Project
Community Liaison Committee (CLC) Meeting
Thursday, October 6, 2016
MINUTES**

The South Bruce Community Liaison Committee met on Thursday, October 6, 2016 at 7:00 p.m. at the South Bruce Municipal Office, 21 Gordon Street East, Teeswater.

Members Present: Jim Gowland, Chair, Mayor Robert Buckle; Vice-Chair, Les Nichols, Councillor Margie Bates, Councillor Mark Goetz, Doug Culbert

Members Absent: Corbyn Critchfield, George Miller, Brian Knox

NWMO Staff: Joanne Facella, Director of Social Research and Dialog; Paul Austin, Relationship Manager for Southern Ontario; Cherie Leslie, Senior Engagement Advisor; Dr. Ben Belfadhel, Director, APM Geosciences, NWMO; Maria Sanchez, NWMO; Andy Keir, AECOM.

Municipal Staff: Casey Bates, CLC Project Coordinator; Kendra Reinhart, Administrator Treasurer

Residents: Marcie & Leo Gowland, Lloyd & Shirley Kuntz, Brent, Ron Schnurr, Irma Arkesy

1. CALL TO ORDER:

Chair Jim Gowland called the meeting to order at 7:03 p.m. and welcomed everyone to the meeting.

2. ADOPTION OF AGENDA:

MOTION CLC-2016- 39

Moved by: Margie Bates
Seconded by: Les Nichol

Agenda That the agenda for the CLC meeting of October 6, 2016 be adopted as circulated.

Motion: Carried

3. DISCLOSURE OF PECUNIARY INTEREST AND NATURE THEREOF:

None

4. MINUTES OF THE PREVIOUS MEETING:

4.1 September SBCLC Regular Meeting

MOTION CLC-2016-40

Moved by: Les Nichol
Seconded by: Bob Buckle

Minutes That the Minutes of the South Bruce Community Liaison Committee Meeting held on September 8, 2016, be adopted as printed and circulated.

Motion: Carried

5. DELEGATIONS:

None

6. NWMO TASK LIST REVIEW:

MOTION CLC-2016-41

Moved by: Mark Goetz
Seconded by: Doug Culbert

Task List That the SBCLC Meeting Task List presented to the October 6, 2016 South Bruce Community Liaison Committee Meeting, be received for information.

Motion: Carried

7. REPORTS:

None

8. EDUCATION:

8.1 Dr. Douglas Boreham, Ph.D - Professor at the Northern Ontario School of Medicine, Division Head for the Medical Sciences Division and the Bruce Power Research Chair in Radiation and Health - Breakthroughs of Low Dose Cancer research and Help Debunk Some of the Myths about the Effects

of Radiation.

Chair Gowland welcomed Dr. Boreham who provided the CLC with a presentation on Radiation and the effects of Low Doses on Cancer. He shared information about the presence of naturally occurring radiation in our surroundings and demonstrated that low doses of radiation are emitted by common household items, as well as in the air.

• **8.2 Initial Borehole Drilling to Advance Learning**

- Ben Belfadhel, Director, APM Geosciences, and Jo-Ann Facella, Director of Social Research and Dialog - Initial Borehole Drilling to Advance Learning & Preliminary Assessment of Potential Suitability Pamphlet.

Chair Gowland welcomed Dr. Ben Belfadhel, Director, APM Geosciences, and Jo-Ann Facella, Director of Social Research and Dialog who provided the CLC with a presentation regarding available options for Initial Borehole Drilling on Municipal land, and next steps to be taken to engage the community on selecting together a preferred location for this initial borehole.

MOTION CLC-2016-42

Moved by: Les

Seconded by: Doug

Recommendation

That the SBCLC Committee recommend to Council that the NWMO should go ahead with the engagement of the South Bruce Community regarding Initial Borehole Drilling.

Motion: Carried

9. **COMMUNICATIONS**: None

10. **NEW BUSINESS**:

- a. Paul discussed new business concerning the Oakville Facility and having the CLC meeting at the Open House.

MOTION CLC-2016-43

Moved by: Les Nichol

Seconded by: Doug Culbert

New Business

That the SBCLC Committee Meeting be held on Thursday, November 3, 2016 at 7:00 p.m., at Mildmay-Carrick and that if council agrees that it is also to be the open house or, at the call of the Chair.

Motion: Carried

- b. Jim discussed the CNS Conference in Ottawa. Bob thanked Jim for his representation of South Bruce and commended him on his exceptional dialogue with the audience. Members that attended the CNS Conference each gave a brief dialogue on their highlights of the conference. Both Chair Gowland and Administrator-Treasurer Reinhart expressed an interest in having the CNSC present at a SBCLC meeting.

Action: Members are to let Mayor Bob Buckle know when any members will be on holidays.

Action: Put Advertisement in the paper for Change of venue & the Open House on November 3, 2016.

Action: Contact CNSC

11. ADJOURNMENT:

MOTION CLC-2016-44

Moved by: Mark Goetz

Seconded by: Les Nichol

Adjournment

That we do now adjourn at 9:25 p.m., to meet again on November 3, 2016 at 7:00 p.m. at the Mildmay Recreation Complex, should the Open House occur at that time, or at the call of the Chair.

Motion: Carried

Chair

Vice-Chair

CLC Secretary

09-Jun-16		Casey Bates	SBCLC Coordinator to contact the current student member of the committee to seek his interest to remain on the committee and further contact the high schools to seek interested students to sit as a member on the committee.			The Current Student Member has not responded to any emails. Called High Schools. Waiting for replies.
08-Sep-16	CLC-2016-35	Casey Bates & Paul Austin	SBCLC Coordinator and Paul to incorporate the Radon information into the NWMO information.		September-30-16	The Radon information is at the NWMO Office
08-Sep-16	CLC-2016-35	Casey Bates	SBCLC Coordinator: Mail out to all residents of the South Bruce Community the CLC Meeting Flyer.		September-28-16	Flyers mailed out to all of South Bruce.
06-Oct-16		CLC Members	CLC Members are to let Mayor Bob Buckle know when any members will be on holidays to plan for the Oakville Tour.			
06-Oct-16		Casey Bates	Put an Advertisement in the paper for the Change of Venue for the CLC meeting & Open House		October -19-16	An advertisement was put in the Mildmay Town Crier for 2 wks.



Corporation of the Municipality of South Bruce

Report Title: SBCLC Project Coordinator Report
Prepared By: Casey Bates
Department: Administration
Date: November 3, 2016
Report Number: A 2016-11-03
Attachments: Potential Speakers

Recommendation

That Report #A2016-11-03 titled "SBCLC Project Coordinator Report" be received for information purposes.

Report Origin

The Project Coordinator provides regular reports to the CLC for information

1. South Bruce Community Liaison Committee Update and Initial Borehole Siting Drilling to Advance Learning & Preliminary Assessment of Potential Suitability

Chair Gowland presented the CLC's recommendation to approve NWMO to begin engagement with the community to identify a preferred location for drilling an initial borehole to advance understanding of the geology across the community. The Council passed a Motion to do so, on October 11, 2016

2. Community Engagement

There has been a steady increase of visitors to the NWMO office in the past few months. We are seeing at least one or two visitors each day and upwards of 8 in a day. .

The SBCLC sent out its first Monthly Meeting Flyer to notify residents of upcoming meetings and the speakers that will be presenting at the meetings. There were 6 residents present at the last SBCLC meeting, as a result.

Recommendation: That the information on Community Engagement be received for information.

3. CNSC

It was suggested that CNSC would be a good resource for speakers and new subjects to explore. There was also an interest in having a CNSC member speak at a CLC meeting.

Recommendation: That the project coordinator contact the CNSC to both ask for a

presentation from a CNSC member and suggestions on other speakers and topic ideas.

Submitted by *Casey Bates* SBCLC Project Coordinator

Reviewed by: _____
Administrator-Treasurer



Corporation of the Municipality of South Bruce

Report Title: Municipal Update
Prepared By: Leanne Martin, Clerk
Department: Administration
Date: October 28, 2016
Report Number: CLC-11-01-2016
Attachments:

Economic Development & Innovation Summit

Councillor Niesen and Clerk Martin attended the Economic Development and Innovation Summit on September 14, 2016. The Summit was hosted by Bruce Power and Bruce County who are working together to establish and support a new regional economic development and innovation initiative. The goal of the initiative is to leverage economic opportunities for local communities with the multi-year, multi-billion investment programs Bruce Power is completing with the refurbishment of six reactors.

During the Summit the following presentations were provided:

- **An Economic Outlook – Sustainable Economic Growth**
Robert Lavigne, Manage Director, Economic Research, OMERS Capital Markets
- **Bruce Power’s Strategic Long-term Vision – a multi-year outlook**
Mike Rencheck, President and CEO, Bruce Power
- **Workforce Development – A building Trades Perspective**
Patrick Dillon, Business Manager and Secretary Treasurer provincial Building & construction trades Council of Ontario
- **Building Successful Partnerships**
Michael Fenn, Former Ontario Deputy Minister and former CAO of Hamilton and Burlington
- **Bruce County Economic Development A “Macro Approach”**
Kelley Coulter, CAO County of Bruce

Copies of these presentations can be found on the Bruce Power Website:

<http://www.brucepower.com/about-us/refurbishment/economic-development-and-innovation-initiative/economic-development-and-innovation-summit-presentations-sept14/>

Following presentations Stellina Williams, Business Investment Specialist and James Scongack, VP, Corporate Affairs, for Bruce Power facilitated a working session to engage discussion and input related to the development of a nuclear industry investment strategy. The exercise provided the opportunity to offer inputs related to Vision, Goals, and Key Activities/Actions and Performance Measurers as it would relate to the Nuclear Industry Investment Strategy.

The advisory committee will meet quarterly to review the inputs which will contribute to the framework of a strategy to move forward.

Submitted by:
Leanne Martin, Clerk

2016 Phase 2 Preliminary Assessment Update

Presented by: Paul Austin, NWMO

Objective of Phase 2 Assessments of Sites

To develop confidence on selection of a preferred location to take into detailed site characterization

- Safety** Confidence a deep geological repository can be developed with strong safety case at that location
- Transportation** Confidence a safe, secure and socially acceptable transportation plan can be developed
- Partnership** Confidence a strong partnership can be developed – with interested community, First Nation and Métis communities in the area, and surrounding communities

Status of Studies in South Bruce

- South Bruce entered the learning and site selection process in 2012
- Initial Screening was completed in August 2012
- Phase 1 Preliminary Assessment was Completed in December 2014 and **Phase 2 of Preliminary Assessment** is underway
- Findings to date indicate South Bruce contains large areas that have the potential to satisfy NWMO's geoscientific site evaluation factors. More studies are needed to further advance understanding of the geology in the area

The Project will only proceed with the involvement of the interested community, First Nation and Métis Communities in the area, and surrounding communities, working in partnership to implement it

3



Initial Borehole Drilling

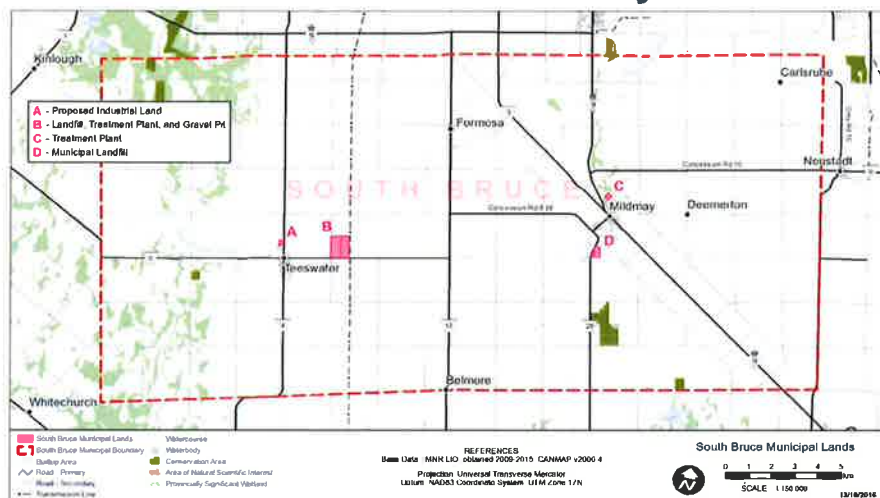
- NWMO has reviewed municipally owned land holdings supplied by the Municipality and assessed their suitability for the initial research borehole
- 4 possible locations for an initial borehole have been identified and NWMO is working with the community to identify a preferred location
- South Bruce has not agreed to host a repository for used nuclear fuel. This initial borehole is for research purpose only and is not expected to be a repository site

Field studies will be planned and implemented in collaboration with people in the area

4



Possible Areas for an Initial Borehole- for Discussion with Community



5



Work Completed in South Bruce to Support Phase 2 Assessment

Continuing the Conversations

- Open houses, briefings, networking, community office, community events

Learning

- WWMF site tour, learn more briefings, media reporting, subject matter experts, advertorials, websites, newsletters

Technical Assessment

- Environmental, Engineering and Transportation desktop studies underway. Geoscientific field studies being planned

6



Some Key Activities in 2016

- Project Economics update
- Review of updated project description
- Phase 2 open house in April (Mildmay)
- Review of Canadian used fuel repository multi-barrier system
- CSR Local Initiatives program



Some Key Activities in 2016, Continued...

- Scientists In School program: 70 workshops in 56 schools across Grey, Bruce, Huron and Perth including in Ripley, Lucknow, Mildmay and Teeswater
- CNS 3rd Canadian Conference on Nuclear Waste Management
- UFTP exhibit for Mildmay, Lucknow and Ripley Fall Fairs
- Council agreement to proceed with community engagement for an initial borehole to advance understanding of general geology
- Local Media Day at the Huron-Kinloss LMC
- Phase 2 open house in November (Mildmay)



Open House Dialogue on an Initial Borehole

- What is important to know about each of the areas identified on the map, before decisions are made about where to drill the initial borehole?
- What about each area would make it a good site to drill a borehole? What, if any, concerns would you have?
- Are some of these areas preferred over others for an initial borehole? Which ones? Why?



 nwmo

Corporate News

- March 2016– NWMO submits Annual Report to the Minister of Natural Resources, who tabled it in parliament

“... The Government of Canada believes strongly in the importance of the NWMO's mandate...”



 nwmo

More News...

- April – NWMO updates project cost estimate and associated timeline estimates (this happens approx. every five years)
- August – NWMO issues updated 5-year strategic plan for public comment
- President Ken Nash retired Sept 30, and new President Laurie Swami will begin leading the NWMO in November



What Else is Occurring

- Tour of the Oakville Test Facility in December
- Issue RFP for borehole work to begin preparations
- 2017 Spring/Summer Open House
- Begin to implement initial investments in workshops, education and general skills development in 2017



NWMO Learn More Centre

- 10 Clinton Street, Teeswater
519-386-6711
www.nwmo.ca
- Open Tuesdays, Wednesdays and Thursdays
10 am to 3 pm
- Please drop in with questions or comments



South Bruce Community Liaison Committee (CLC)

CLC meets the first Thursday of every month unless otherwise noted at the Municipal Council Chambers. 21 Gordon Street East, Teeswater.

Everyone is welcome.

(Visit online at www.cicinfo.ca/southbruce/)



Planning for APM: Early Investments in Education and Skills

Presented by: Paul Austin, NWMO
Andy Keir, AECOM

Early Investments in Education & Skills

About the Program

- Emerged from early discussions with communities
- Building capacity to prepare locally for APM Project
- Provide training and skills that relate to potential APM careers
- Transferrable skills – applied to other projects or work places.
- Early capacity building activities should have a broader focus until NWMO has narrowed its studies down to focus on just one or two areas.

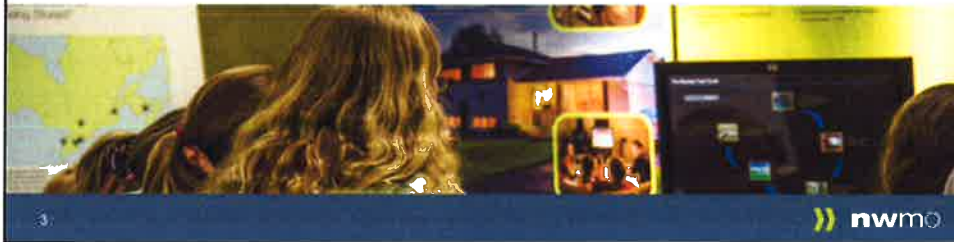
In discussions with communities, an initial and early list of activities has been identified as appropriate for this early phase of work.



Potential Activities

Focus on Youth – Support for:

- Before/after school/intermural or summer programs
 - sports/science/math/computer enrichment programs
- Trips for youth enrichment.
 - ex. grade 7/8 trip with science, math or environment component
- Academic awards - Small grants or honoraria for graduating students
- Sponsorships for youth to attend a science/math/environment camps
- Student internships
- Youth training



Potential Activities

Community Members – Support for:

- Workshops for general skills development on topics such as:
 - Computer literacy and skills: Microsoft office, AutoCAD
- Business planning - developing a business plan for entrepreneurs
- Writing a Proposal in response to a RFP, grant and/or funding proposal
- Basic book keeping
- First Aid training
- Project planning/ management
- Facilitation skills – e.g., for processes/meetings
- Communication training
- Skills training



Working Collaboratively with Communities

2017 implementation of initial capacity building program

- NWMO continues to work with communities to understand how to support capacity building, education and skills
- Initially, the NWMO will work with communities to develop and then implement an initial set of activities.
- Initial program is expected to be modest as needs may evolve over time
- As the siting process advances, this program may extend to other communities in the immediate area

5



Looking Ahead: Phase 2 Site Selection Planning Assumptions*



** Timelines are illustrative, to guide planning. Actual timelines may vary.*

6

